

A regional perspective to the study of affective polarization

LUCA BETTARELLI,¹  ANDRES REILJAN²  & EMILIE VAN HAUTE¹ 

¹*Centre d'étude de la vie politique (Cevipol), Université libre de Bruxelles (ULB), Belgium;* ²*Johan Skytte Institute of Political Studies, University of Tartu, Estonia*

Abstract. This research note investigates the scope of regional variations in levels of affective polarization across Europe and contrasts it with national scores to highlight the theoretical and empirical interest of a disaggregated approach. Using all waves of the Comparative Study of Electoral Systems (CSES) dataset, we compute an affective polarization score for 143,857 individuals and aggregate these scores in 190 regions nested in 30 countries, across a period ranging from 1996 to 2019, covering 105 elections. We map variations in affective polarization across regions, both cross-sectionally and longitudinally. Our results reveal that the range of scores is larger across regions than between countries and that approximately half of the variation in affective polarization scores can be attributed to within-country heterogeneity. Second, we find that some countries display rather homogeneous regional patterns, while others display heterogeneous scores. Third, we show how the increase in the affective polarization scores over time at the national level can be driven by sharp changes in some regions only, while other regions remain stable. Overall, these results point to the added value of adopting a regional approach to the study of affective polarization.

Keywords: affective polarization; regional studies; political geography; Europe

Introduction

Recently, researchers have started to define political polarization based on people's feelings towards parties and their supporters, instead of the classic ideological divergence approach. A tendency among party supporters to view other parties and their supporters as disliked out-groups, while holding positive in-party feelings, has been labelled as affective polarization (Iyengar et al., 2012; Lelkes, 2016). Affective polarization has been shown to be a problematic phenomenon with dangerous consequences. It can lead to policy gridlock at the elite level and decrease trust towards institutions and satisfaction with democracy among voters (Hetherington & Rudolph, 2015; Oscarsson & Holmberg, 2020). Moreover, intense partisan feelings tend to go further than the political sphere and divide the whole society into antagonistic groups who perceive each other as enemies and might even condone political violence against the out-group (Martherus et al., 2021; McCoy et al., 2018). Events such as the storming of the Capitol on 6 January 2021 vividly illustrate the dangers of such political resentment.

Affective polarization research has hitherto focused mostly on the United States context, where the level of partisan animosity has soared over the past decades (Iyengar et al., 2019). In recent years, research on the topic has also proliferated in other parts of the world, predominantly in Europe. A rapidly increasing volume of literature has by now established that affective polarization is undoubtedly present also in European (multi)party systems, although the levels of it vary majorly across countries, as different countries exhibit diverging dynamics (see Boxell et al., 2020; Gidron

[Correction added on 6 September 2022, after first online publication: Copyright line and Legal statement have been updated in this version.]

et al., 2020; Lauka et al., 2018; Reiljan, 2020; Reiljan & Ryan, 2021; Wagner, 2021; Ward & Tavits, 2019; Westwood et al., 2018).

Currently, the cross-national research on affective polarization has focused on variations across countries, over time or between individuals. Thereby, it implicitly assumes a homogeneous regional distribution of affective polarization within countries. Consequently, when studying the potential foundations of affective polarization, the attention has gone to country- or individual-level predictors (Boxell et al., 2020; Gidron et al., 2020; Hartevelde, 2021), ignoring regional characteristics that might drive partisan feelings. In the U.S. literature on affective polarization, the regional aspect has also been mostly overlooked, although some pieces of evidence suggest notable geographical divergences. For example, Iyengar et al. (2012) found that residents of the so-called battleground states exhibit higher levels of affective polarization, and a study by Tobias Konitzer (reported in *The Atlantic*¹) indicated that the level of partisan prejudice could vary significantly across counties in the United States. Yet, we lack a systematic comparative study of regional variations in affective polarization either in the United States or in Europe.

This gap is surprising, as many recent studies investigating Brexit or the rise of populist radical right parties show that political attitudes and radical voting patterns vary heavily across regions (Ford & Jennings, 2020; Gimpel et al., 2020; Stockemer, 2017). Authors have emphasized how long-term structural socio-economic changes have contributed to increasing geographical disparities within countries, with some (often urban) regions attracting economic development, skilled workforce and capital, and other (rural) areas facing decline (McKay, 2019). The development of these 'left behind' areas and 'places that don't matter' (Rodriguez-Pose, 2018) has been pinpointed as drivers of a 'geography of discontent' (McCann, 2020). Such regional socio-economic disparities contribute to widening the gap in political attitudes (Cramer, 2016) and have been linked to the development of radical, anti-system, populist voting behaviours (Becker et al., 2017; bin Zaid & Joshi, 2018; Greve et al., 2021; McKay, 2019; Rodden, 2019; Van Hauwaert et al., 2019). However, this recent revival of the regional approach has mainly focused on Britain and the United States and has not been connected to the literature on affective polarization.

This research note aims at filling this gap by investigating the scope of regional variations in levels of affective polarization across Europe. After a brief conceptual and methodological discussion, we present disaggregated data on affective polarization in 190 regions in 30 countries, over a period ranging from 1996 to 2019. Subsequently, we map affective polarization scores across these regions, both cross-sectionally and longitudinally. Our results reveal that regional variations are highly significant in the European context and underline the potential relevance of a regional approach in the study of affective polarization.

Defining and measuring affective polarization at a regional level

Our main goal is to measure affective polarization at the regional level and to contrast it to national scores to highlight the interest in a disaggregated approach. Affective polarization is usually measured at the individual level by survey items asking respondents to rate their feelings towards parties/party supporters (Iyengar et al., 2019). In the U.S. two-party context where most of the affective polarization research has hitherto been conducted, the degree of affective polarization is determined by the difference in the evaluations towards the two main parties. Applying this concept to multiparty systems, however, implies some conceptual and methodological elaborations.

In a multiparty context, voters can simultaneously like (or dislike) more than just one party, which makes it significantly more complicated to grasp the degree of affective polarization. Some authors have defined affective polarization as the difference between feelings towards one in-party and several out-parties (Gidron et al., 2020; Reiljan, 2020). By clearly defining a partisan in-group, this definition aligns more closely with the “partisanship as a social identity” approach as it was originally proposed by Iyengar et al. (2012). An alternative approach suggests dropping the in- and out-party distinction and conceptualizes affective polarization as the extent to which the partisan landscape is divided into distinct (affective) camps/blocs that may consist of one or more parties (Kekkonen & Ylä-Anttila, 2021; Wagner, 2021). By focusing on the overall distribution of positive and negative feelings towards parties, this definition could better account for the potential reality of voters sympathizing with more than one party.

These two definitions of affective polarization in multiparty systems translate into two alternative measurement approaches. In line with the first definition, Reiljan (2020) proposes the Affective Polarization Index that calculates the average like–dislike difference between the one party that the voter feels closest to (in-party) and all relevant out-parties (see also Boxell et al., 2020; Gidron et al., 2020). To operationalize the second definition, Wagner (2021) lays out the Spread-of-Scores index that measures the spread of party like-dislike evaluations around the respondent’s mean score (see also Ward & Tavits, 2019, for a similar approach). Both authors also agree that in a multiparty context, the size of the parties should be taken into account. Thus, they weight the measures with party vote shares, so that larger parties have a higher impact on the index values (Dalton, 2008; Reiljan, 2020; Wagner, 2021).

The theoretical and empirical debate on how to best capture affective polarization in multiparty systems is still far from resolved. However, both approaches described above have been accepted by researchers and are likely to give a reasonably accurate estimate of the degree of affective polarization in multiparty contexts. The most suitable measurement depends on the research problem and available data.

In this paper, we rely on Wagner’s definition and his matching spread/standard deviation measure for theoretical and empirical reasons. There are likely to be substantial regional variations in party structure: the popularity of different parties varies and sometimes even the parties that are running for office are not identical across regions. In such a case, a measure of general dispersion of feelings towards parties should ensure better comparability than an approach that groups voters based on their party preference. From the empirical perspective, dividing respondents into partisan groups based on their party preference is problematic in the case where there are few respondents (and even fewer of them having a partisan identification) per regional unit. As in our data the number of respondents is rather small in some regions, Wagner’s spread approach is more easily applicable.

Data and measurements

We first retrieve individual-level data from the Comparative Study of Electoral Systems (CSES) dataset,² where a question asking respondents to evaluate each party in the national ballot box on a 0–10 scale is available in all waves.³ We then aggregate measures of affective polarization at the regional and national levels.

As explained, we use the weighted version of Wagner’s *Spread-of-Scores* index of affective polarization (Wagner, 2021).

The index is first computed at the individual level based on the following equation:

$$Spread_i = \sqrt{\sum_{p=1}^P v_p (like_{ip} - \overline{like}_i)^2}$$

where subscripts i and p indicate each survey respondent and each party in the national ballot box, V_p represents the party vote share, $like$ signifies the like–dislike evaluation of individual i towards a party p on a scale from 0 (strong dislike) to 10, and \overline{like}_i is the respondent's i 's average party like–dislike score. After this computation, we end up with an affective polarization score for a total of 143,857 individuals.

Thereafter, we aggregate these individual-level scores at the regional and country levels. We group survey respondents by their country and region of residence and calculate the average level of affective polarization for each country and region.⁴ We restrict the analysis to countries with the Nomenclature of territorial units for statistics (NUTS) classification system provided by the European Commission,⁵ to have a homogeneous method of spatial aggregation across countries. In the Appendix, we provide more details about the way we assign a NUTS classification to each region in the CSES dataset.⁶ CSES covers a time span of over 20 years (1996–2019), and most countries are included with more than one election. Consequently, there are three levels of data in our dataset: regions and elections, both nested within countries. Our final dataset includes affective polarization scores for 30 countries, 190 regions, and 105 elections.

We contrast country and regional affective polarization scores both cross-sectionally and longitudinally. Our cross-sectional analysis presents the aggregated data at the country/regional level by computing the mean country/regional affective polarization score, pooled across all available elections. We also provide a longitudinal analysis that offers a dynamic interpretation of country/regional levels of affective polarization by dividing the time span at disposal (i.e., 1996–2019) into two sub-periods, with the Great Recession (2008) as the exogenous shock separating the two.

As mentioned before, a low number of observations per region is a problem that we faced with the data at our disposal. In ca. 6 per cent of the cases, the number of respondents per region remains under 30. Also, in some smaller European countries, the number of regions is low (one to two regions per country). In our analyses below, the maps include all regions, regardless of the N of respondents and the N of regions per country. However, in the analysis where we compare the cross-regional and cross-national variation in the levels of affective polarization, we have taken a more cautious approach and excluded regions with less than 30 respondents and countries with less than three regions.

Cross-sectional analysis of affective polarization

Our cross-sectional analysis contrasts affective polarization scores aggregated at the country level and at the region level, pooled for the entire period (see maps in Figure 1).⁷

Country-level scores oppose countries with high levels of affective polarization (e.g., Bulgaria, France and Hungary) and moderately high levels (e.g., Czech Republic, Poland and Slovakia), to countries with moderately low (e.g., Norway, Romania and Spain) or low levels (e.g., Belgium, Finland, the Netherlands and Slovenia).

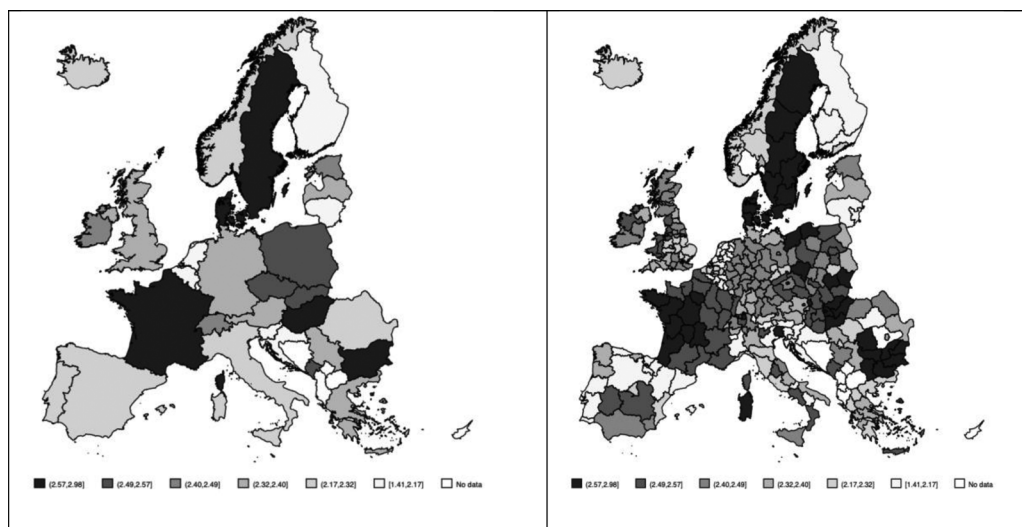


Figure 1. Affective polarization index by country vs. by region

However, when disaggregating at the regional level, the picture is much more nuanced. Some countries present very heterogeneous scores at the regional level. For instance, France is split in half, with western regions displaying higher levels than eastern regions. Poland and Hungary offer an internally heterogeneous picture as well. Similarly, some countries in (light) blue in the country map display heterogeneous regional patterns. Italy's regional map reveals pockets of regions with higher levels of affective polarization (e.g., Sardinia). The same pattern can be observed in Romania and Spain, the latter being the country that displays the highest within-country variation in our sample. Belgium and Portugal are split in half, with southern regions displaying lower levels of affective polarization. Countries with scores close to the central intervals are also internally heterogeneous. The United Kingdom has split across a north–south and west–east divide; Germany, Greece and Switzerland also show some notable regional variations. These maps, shown side-by-side, help visualize how aggregating scores at the country level masks within-country variations, and how high or low scores in countries can be driven by some regions only.

To go beyond visual contrasts, Table 1 displays the summary statistics for our cross-sectional analysis, limiting the sample to countries with at least three regions and regions with at least 30 observations. For each country, we specify the average affective polarization score at the country level (mean), and we indicate the number of regions included, the standard deviation around the mean for these regions, and the minimum and maximum regional scores. It allows us to contrast within-country variations and between-country differences in affective polarization scores.

At the country level, we can see that the Netherlands displays the lowest average score (1.81) and Bulgaria the highest (2.89). When disaggregating by region, we see that the lowest score (1.53) is in Spain and the highest (2.98) in Hungary. Overall, the range of scores is, therefore, larger across regions.

The last column in Table 1 displays the analysis of variance (ANOVA) *F*-test to statistically assess the equality of means across regions, within countries. Only in four countries (Bulgaria, Ireland, France and Slovakia), we cannot reject the null hypothesis of equal means across regions.

Table 1. Cross-sectional affective polarization scores by country and regions (entire period)

Country	Mean	<i>N</i>	<i>SD</i>	Min.	Max.	<i>F</i> -test
Austria	2.31	9	0.15	2.05	2.52	6.74***
Belgium	2.07	3	0.17	1.92	2.26	68.19***
Bulgaria	2.89	6	0.04	2.82	2.96	0.32
Czech Republic	2.51	8	0.06	2.40	2.58	2.53**
Finland	2.11	4	0.10	2.02	2.22	17.56***
France	2.57	7	0.03	2.51	2.61	0.93
Germany	2.38	16	0.10	2.17	2.53	6.82***
Greece	2.39	4	0.11	2.33	2.55	8.04***
Hungary	2.73	3	0.24	2.50	2.98	17.68***
Ireland	2.49	3	0.03	2.47	2.53	0.21
Italy	2.37	16	0.21	2.03	2.71	2.92***
The Netherlands	1.81	4	0.03	1.78	1.85	2.15*
Norway	2.28	6	0.05	2.24	2.37	9.35***
Poland	2.50	16	0.12	2.30	2.67	3.09***
Portugal	2.17	5	0.12	2.07	2.38	15.31***
Romania	2.35	7	0.16	2.08	2.59	12.05***
Serbia	2.37	4	0.09	2.26	2.48	2.18*
Slovakia	2.54	4	0.04	2.51	2.57	0.71
Spain	2.12	17	0.34	1.53	2.56	11.81***
Sweden	2.66	8	0.08	2.60	2.86	2.45**
Switzerland	2.48	7	0.09	2.34	2.59	4.61***
United Kingdom	2.37	12	0.09	2.25	2.54	2.80***
Between regions	2.39	169	0.25	1.53	2.98	
Between countries	2.39	22	0.24	1.81	2.89	
Intraclass correlation coefficient	0.51					

Table 1 also reports the intraclass correlation coefficient (ICC), a measure commonly used in the literature to show how much of the total variation in a dependent variable can be explained by between- and within-clusters differences (Bernauer & Vatter, 2012; Curini, 2018). In our analysis, the coefficient refers to the between- and within-countries dynamics. The ICC ranges from 0 to 1, with 1 indicating perfect within-country homogeneity. The reported coefficient (0.51) signals that approximately half of the variation in affective polarization scores is due to within-countries dynamics, thus further justifying our claims.

The information contained in Table 1 is plotted in Figure 2. For each country, we report the national median and the within-country range of affective polarization scores. Figure 2 illustrates three interesting trends. First, data show that within-country variation is at least as relevant as cross-country differences. For instance, the gap between Navarre and Castile-La Mancha in Spain (respectively, showing an affective polarization score of 1.53 and 2.56) is as large as the gap between the first and last country in the national ranking of affective polarization scores

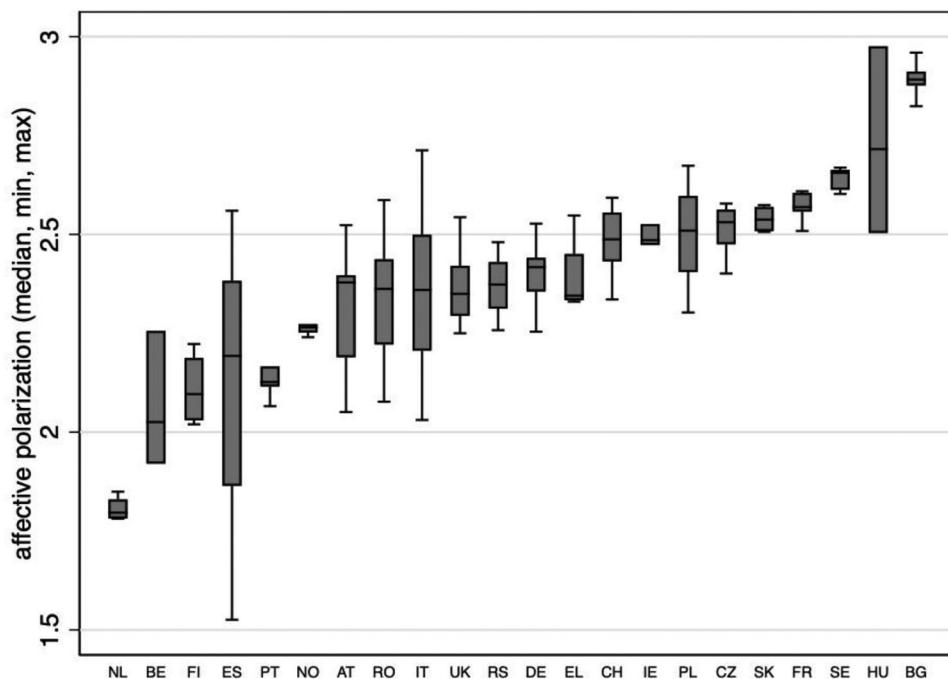


Figure 2. Affective polarization scores by country (median, minimum, maximum), the entire period

(i.e., the Netherlands and Bulgaria). Second, the degree of within-country variation is very heterogeneous across countries, with countries showing huge internal differences (e.g., Spain, Italy and Hungary) that contrast with very homogeneous national contexts (e.g., the Netherlands, Norway, and Bulgaria). Third, there is not a clear-cut correlation between the degree of within-country heterogeneity and the median country-level of affective polarization. Countries with high within-country heterogeneity are present at both extremes of the distribution of the affective polarization score (e.g., Belgium and Hungary).

Longitudinal analysis of affective polarization

Our longitudinal analysis contrasts affective polarization scores aggregated at the country and the region level, before and after 2008.

Figure 3 (scores pre-2008) and Figure 4 (scores post-2008) demonstrate how affective polarization levels have increased in most countries between the two periods, except Austria, Bulgaria, Czech Republic, Germany, Hungary, Iceland and Portugal.⁸

As with our cross-sectional analysis, disaggregating affective polarization scores at the regional level provides a more nuanced picture. It highlights contrasting situations. Italy, Poland, Romania, Spain or the United Kingdom are striking examples of countries characterized by regions with high and low levels of affective polarization that co-exist. This diversity of within-country situations is even more marked in the post-2008 period. The figures also show that the national increase in affective polarization is sometimes driven by sharp increases in some specific regions. In Spain, Galicia, Valencia and Murcia display a sharp increase that pushes the national average up, even if

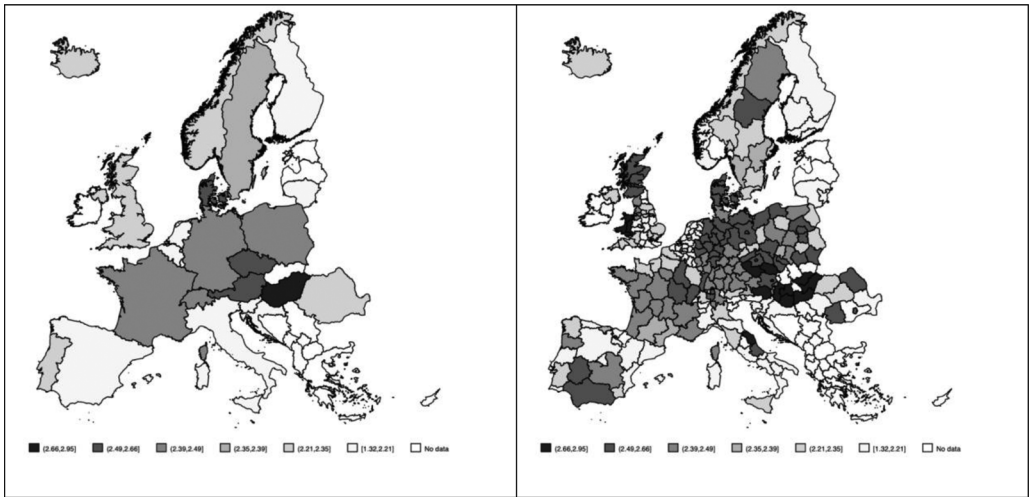


Figure 3. Affective polarization by country versus by region, pre-2008

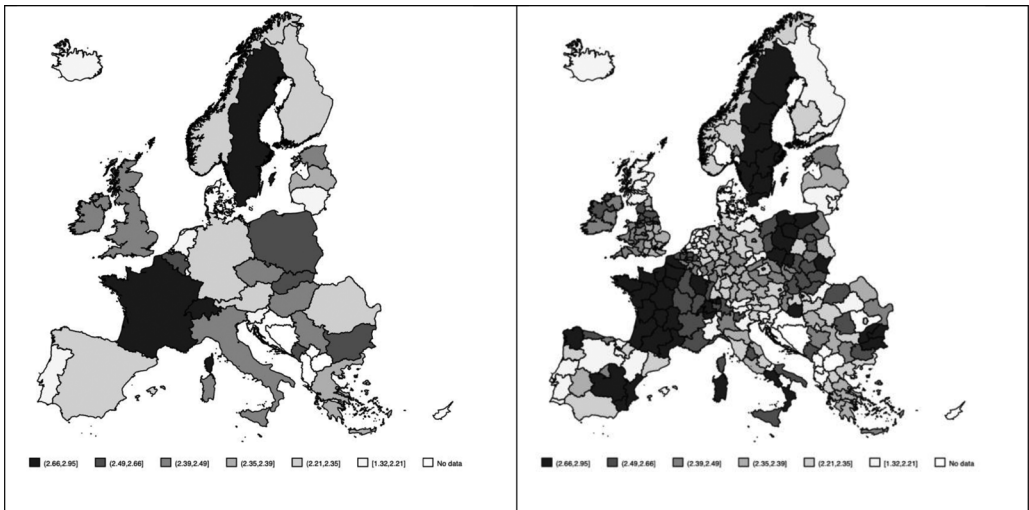


Figure 4. Affective polarization by country versus by region, post-2008

affective polarization scores remain stable in other regions (Aragon, Castilla y Leon). This suggests that it is not so much something happening in Spain in general that can account for the change over time. Rather, it is only by looking at what is happening at a more disaggregated level that we could shed light on this long-term trend.

Table 2 displays the same summary statistics as for our cross-sectional analysis, but for the two sub-periods (pre- and post-2008), again limited to countries with at least three regions and regions with at least 30 observations. At the country level pre-2008, the Netherlands displays the lowest average score (1.76) and Bulgaria the highest (3.09). When disaggregating by region, we see that the lowest score (1.28) is in Spain and the highest (3.26) in Bulgaria. The spread of scores is again larger across regions. A similar pattern can be observed after 2008. The country with the lowest

Table 2. Longitudinal affective polarization scores by country and regions (pre- and post-crisis)

Country	Pre-crisis					Post-crisis					Diff (mean)	
	N	Mean	SD	Min.	Max.	N	Mean	SD	Min.	Max.		F-test
Austria	9	2.38	0.30	1.86	2.71	9	2.27	0.10	2.14	2.44	3.03***	-0.11
Belgium	3	1.98	0.16	1.86	2.16		68.2***					-
Bulgaria	6	3.09	0.11	2.96	3.26	6	2.61	0.21	2.28	2.82	4.52***	-0.48
Czech Republic	8	2.62	0.06	2.51	2.68	8	2.43	0.08	2.27	2.53	2.25**	-0.19
Finland	4	1.91	0.07	1.84	1.99	4	2.21	0.12	2.11	2.36	17.8***	0.30
France	7	2.43	0.05	2.35	2.49	7	2.68	0.08	2.52	2.76	2.57**	0.25
Germany	16	2.45	0.10	2.20	2.66	16	2.30	0.15	1.87	2.47	10.4***	-0.15
Greece						4	2.37	0.06	2.33	2.45	8.01***	-
Hungary	3	2.89	0.29	2.61	3.20	3	2.37	0.19	2.23	2.59	3.51***	-0.52
Ireland						3	2.49	0.03	2.47	2.53	0.21	-
Italy	8	1.90	0.36	1.39	2.33	16	2.48	0.22	2.18	2.94	2.82***	0.58
The Netherlands	4	1.76	0.04	1.73	1.82	4	1.93	0.03	1.90	1.97	1.09	0.17
Norway	6	2.23	0.06	2.16	2.32	6	2.33	0.05	2.26	2.41	4.44***	0.10
Poland	16	2.45	0.12	2.23	2.62	16	2.60	0.18	2.26	2.91	2.34***	0.15
Portugal	5	2.23	0.15	2.12	2.48	5	2.12	0.11	2.00	2.27	3.32***	-0.11
Romania	7	2.35	0.20	2.02	2.59	7	2.34	0.22	1.93	2.62	14.0***	-0.01
Serbia						4	2.37	0.09	2.26	2.48	2.18*	-
Slovakia						4	2.54	0.04	2.51	2.57	0.46	-
Spain	16	2.11	0.36	1.28	2.61	12	2.27	0.55	1.32	2.93	14.2***	0.16
Sweden	8	2.38	0.09	2.29	2.56	8	2.86	0.05	2.78	2.95	1.29	0.48
Switzerland	7	2.38	0.16	2.09	2.54	7	2.67	0.19	2.29	2.84	4.03***	0.29
United Kingdom	11	2.33	0.15	2.15	2.66	12	2.40	0.10	2.18	2.61	3.18*	0.07
Between regions	144	2.34	0.33	1.28	3.26	161	2.43	0.27	1.32	2.95		0.09
Between countries	18	2.33	0.33	1.76	3.09	21	2.41	0.21	1.93	2.86		0.08
Intraclass correlation coefficient	0.53											

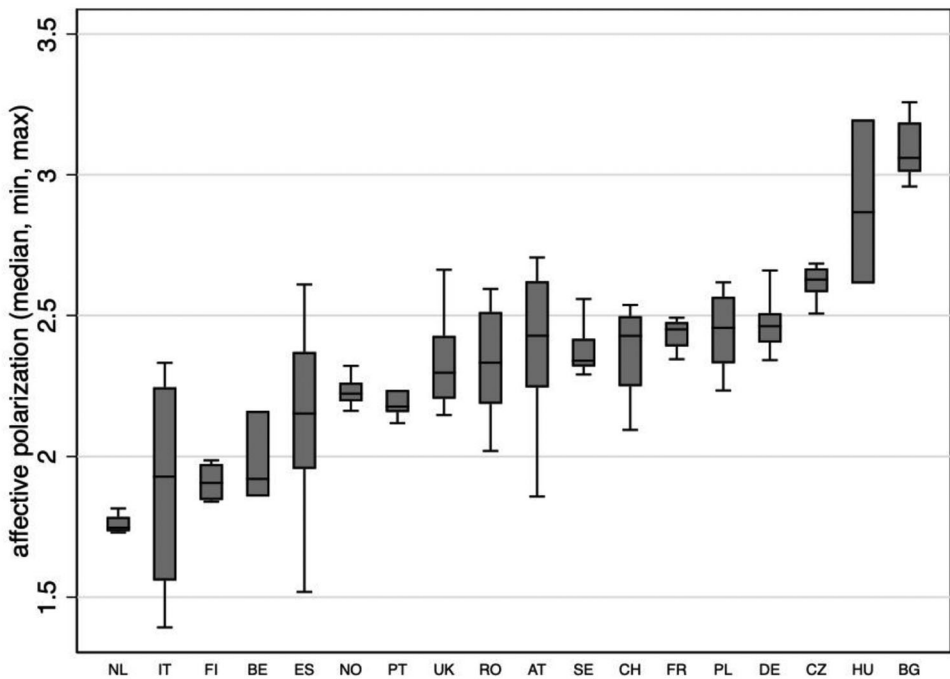


Figure 5. Affective polarization scores by country (median, minimum, maximum), pre-2008

score is still the Netherlands (1.93) and the one with the highest score is Sweden (2.86). When looking at regional variations, the lowest score (1.32) is again in Spain and the highest (2.95) in Sweden. Overall, we show that affective polarization has, on average, increased over time, with Italy and Sweden showing the largest increase.⁹

Table 2 also reports the ANOVA *F*-test and ICC coefficients for the two periods. The latter indicates that the relevance of the within-country heterogeneity has increased over time, accounting for the 60 per cent of the total variation in the affective polarization scores in the post-2008 period.

The information contained in Table 2 is plotted in Figures 5 and 6. For each period and country, we plot the national median and the within-country range of affective polarization scores. It confirms that within-country variation is at least as relevant as cross-country differences. It also confirms the heterogeneity of national situations, with some countries displaying very high levels of within-country variation and others being more homogeneous.

Conclusion

This research note investigated the scope of regional variation in levels of affective polarization across Europe and contrasted it with national variations to highlight the interest in a disaggregated approach. Overall, our cross-sectional and longitudinal analyses have first stressed that more than half of the variation in affective polarization scores can be attributed to within-country heterogeneity. Second, we demonstrated that while some countries display rather homogeneous regional patterns, others exhibit heterogeneous scores. Third, we showed how the increase in the

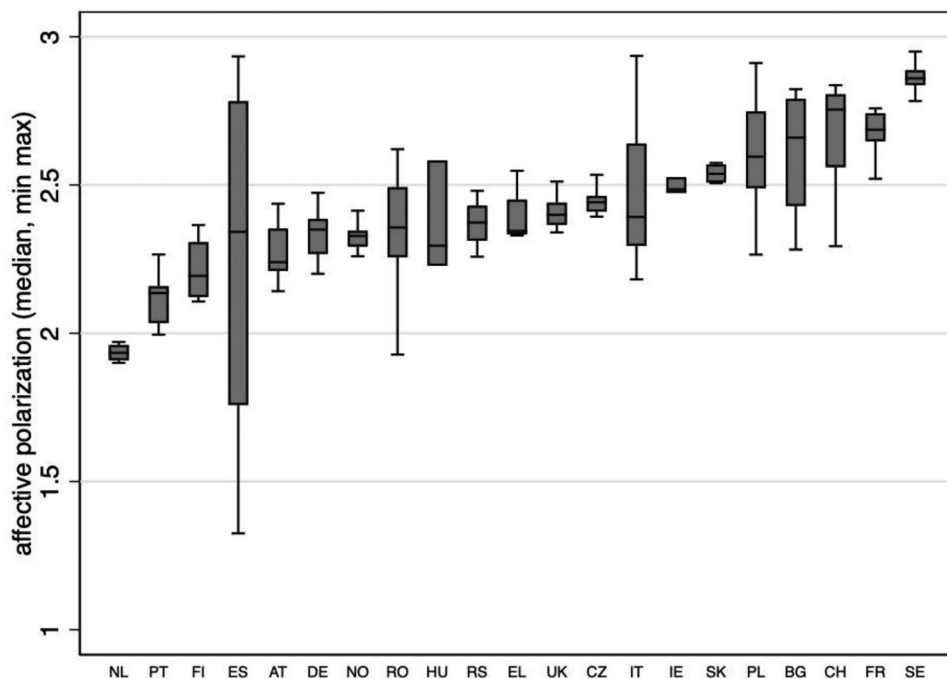


Figure 6. Affective polarization scores by country (median, minimum, maximum), post-2008

affective polarization scores over time at the national level can be driven by sharp changes in some regions only, while other regions remain stable. It highlights how national averages can be driven up or down by some regions. In some instances, looking at national factors will not be enough to account for a change over time. It is only by looking at what is happening at a more disaggregated level that we could shed light on this long-term trend.

These findings point to the added value of a regional approach to the study of affective polarization and its drivers. Existing analyses have often put the emphasis on macro-level drivers of affective polarization, such as institutional and structural factors (Westwood et al., 2018; Gidron et al., 2020); however, high variations within countries indicate that macro-level factors may be less relevant than assumed. Similarly, contrasting findings regarding the effects of economic inequalities or economic downturns on levels of affective polarization (Boxell et al., 2020; Gidron et al., 2020) may be due to a problem of level of analysis. What matters may not be national socio-economic performances, but rather socio-economic disparities across regions, as well as long-term structural regional decline. From a methodological perspective, a regional approach increases the number of observations. Instead of comparing affective polarization across a few dozens of European countries, we can evaluate it across hundreds of regions and produce better models.

Our results pave the way for at least three avenues for future research: investigating the drivers of regional variation in levels of affective polarization, understanding why countries present more or less heterogeneous patterns, and analysing how regional factors can help us better understand the change in affective polarization over time.

Funding Information

Bettarelli received funding from the European Union's Horizon 2020 research and innovation programme under the Marie Skłodowska-Curie grant agreement no. 801505. Reiljan received funding from the Estonian Research Council mobility grant no. MOBJD607. Van Haute received funding from the FWO-FNRS EoS grant no. 30431006.

Conflict of interest

The authors declare that they have no competing interests.

Data availability statement

Data and replication files are available online as Supporting Information. All analyses are run based on publicly available datasets listed in Appendix.

Online Appendix

Additional supporting information may be found in the Online Appendix section at the end of the article:

Supplementary material

Notes

1. See <https://www.theatlantic.com/politics/archive/2019/03/us-counties-vary-their-degree-partisan-prejudice/583072/>
2. CSES original data are available at: <https://cses.org/data-download/download-data-documentation/>. We also provide our final datasets and replication files as online Supplementary Information.
3. The exact wording of the question is: "[...] After I read the name of a political party, please rate it on a scale from 0 to 10, where 0 means you strongly dislike that party and 10 means that you strongly like that party. [...] The first party is [PARTY A]." In the CSES waves 1–4, the variables are IMD3008_A-[I]. In wave 5, variables are E3007_A-[I]. This item – used in almost all of the comparative affective polarization literature – captures feelings towards political parties as broad objects and does not measure affect towards fellow citizens who hold different partisan identities; see Druckman and Levendusky (2019) regarding the importance of this distinction.
4. The variable asking respondents about their region of residence is IMD2008 in waves 1–4 and E2020 in wave 5.
5. For more information about the NUTS classification system, see <https://ec.europa.eu/eurostat/web/nuts/background>.
6. We checked if our data well-represent the population of each region. First, as noted in the CSES codebook (Part 6 “Designs and Weights”), most countries used stratified samples according to Eurostat NUTS-3 regions (or municipalities) based on age, gender, and area to the 18+ population in each stratum. Moreover, we made additional robustness checks by comparing our data with Eurostat, in terms of gender and age of the regional population. Results, not reported in this note for the sake of brevity but available upon request, reassured us on the consistency of our regional level analysis.
7. Maps have been drafted using Stata command *spmap*. Affective polarization scores have been classified using the quantile method. In the cross-sectional analysis, it is based on the regional distribution of affective polarization for both country-level and regional-level analyses. We do it to homogenize intervals and ease comparison between maps. We split the affective polarization scores into six categories, from very low (light grey) to very high (black). We also tried to use the country-level distribution of affective polarization to compute intervals and the overall visual message does not qualitatively change.

8. In the longitudinal analysis, maps' intervals are based on the regional distribution of affective polarization in the post-crisis period. We do it to homogenize intervals and ease comparison between maps. Other distributions of affective polarization have been used to compute intervals and the overall visual message does not qualitatively change.
9. This overall trend of increase in levels of affective polarization is in contrary to the findings of Gidron et al. (2020) and Boxell et al. (2020), but it should be noted that the country samples and the time coverage of these studies are different from this note.

References

- Becker, S. O., Fetzer, T., & Novy, D. (2017). Who voted for Brexit? A comprehensive district-level analysis. *Economic Policy*, 32(92), 601–650.
- Bernauer, J., & Vatter, A. (2012). Can't get no satisfaction with the Westminster model? Winners, losers and the effects of consensual and direct democratic institutions on satisfaction with democracy. *European Journal of Political Research*, 51, 435–468.
- Bin Zaid, H. & Joshi, D. K. (2018). Where does right-wing populism succeed sub-nationally? Explaining regional variation within France. *Populism*, 1(2), 87–115.
- Boxell, L., Gentzkow, M. & Shapiro, J. M. (2020). Cross-country trends in affective polarization (Working Paper, 26669). National Bureau of Economic Research.
- Cramer, K. J. (2016). *The politics of resentment: Rural consciousness in Wisconsin and the rise of Scott Walker*. University of Chicago Press.
- Curini, L. (2018). Political corruption and valence issues. In L. Curini (Ed.), *Corruption, ideology, and populism* (pp. 1–28). Palgrave Macmillan.
- Dalton, R. J. (2008). The quantity and the quality of party systems: Party system polarization, its measurement, and its consequences. *Comparative Political Studies*, 41(7), 899–920.
- Druckman, J. N., & Levendusky, M. S. (2019). What do we measure when we measure affective polarization? *Public Opinion Quarterly*, 83(1), 114–122.
- Ford, R., & Jennings, W. (2020). The changing cleavage politics of Western Europe. *Annual Review of Political Science*, 23, 295–314.
- Gidron, N., Adams, J., & Horne, W. (2020). *American affective polarization in comparative perspective*. Cambridge University Press.
- Gimpel, J. G., Lovin, N., Moy, B., & Reeves, A. (2020). *The rural-urban gulf in American political behaviour*. *Political Behavior*, 42, 1343–1368.
- Greve, M., Fritsch, M., & Wyrwich, M. (2021). Long-term decline of regions and the rise of populism: The case of Germany (*Jena Economic Research Papers*, 006. Friedrich Schiller University Jena, Jena, Germany).
- Harteveld, E. (2021). Ticking all the boxes? A comparative study of social sorting and affective polarization. *Electoral Studies*, 72, 102337.
- Hetherington, M. J., & Rudolph, T. J. (2015). *Why Washington won't work: Polarization, political trust, and the governing crisis*. University of Chicago Press.
- Iyengar, S., Sood, G. & Lelkes, Y. (2012). Affect, not ideology. A social identity perspective on polarization. *Public Opinion Quarterly*, 76(3), 405–431.
- Iyengar, S., Lelkes, Y., Levendusky, M., Malhotra, N., & Westwood, S. J. (2019). The origins and consequences of affective polarization in the United States. *Annual Review of Political Science*, 22(1), 129–146.
- Kekkonen, A., & Ylä-Anttila, T. (2021). Affective blocs: Understanding affective polarization in multiparty systems. *Electoral Studies*, 72, 102367.
- Lauka, A., McCoy, J., & Firat, R. B. (2018). Mass partisan polarization: Measuring a relational concept. *American Behavioral Scientist*, 62(1), 107–126.
- Lelkes, Y. (2016). Mass polarization: Manifestations and measurements. *Public Opinion Quarterly*, 80(1), 392–410.
- Martherus, J. L., Martinez, A. G., Piff, P. K., & Theodoridis, A. G. (2021). Party animals? Extreme partisan polarization and dehumanization. *Political Behavior*, 43(2), 517–540.
- McCann, P. (2020). Perceptions of regional inequality and the geography of discontent; Insights from the UK. *Regional Studies*, 54(2), 256–267.

- McCoy, J., Rahman, T., & Somer, M. (2018). Polarization and the global crisis of democracy: Common patterns, dynamics, and pernicious consequences for democratic polities. *American Behavioral Scientist*, 62(1), 16–42.
- McKay, L. (2019). ‘Left behind’ people or places? The role of local economies in perceived community representation. *Electoral Studies*, 60, 102046.
- Oscarsson, H., & Holmberg, S. (Eds.). (2020). *Research handbook on political partisanship*. Edward Elgar Publishing.
- Reiljan, A. (2020). ‘Fear and loathing across party lines’ (also) in Europe: Affective polarisation in European party systems. *European Journal of Political Research*, 59(2), 376–396.
- Reiljan, A., & Ryan, A. (2021). Ideological tripolarization, partisan tribalism and institutional trust: The foundations of affective polarization in the Swedish multiparty system. *Scandinavian Political Studies*, 44(2), 195–219.
- Rodden, J. A. (2019). *Why cities lose: The deep roots of the urban-rural political divide*. Basic Books.
- Rodriguez-Pose, A. (2018). The revenge of the places that don’t matter (and what to do about it). *Cambridge Journal of Regions, Economy and Society*, 11(1), 189–209.
- Stockemer, D. (2017). The success of radical right-wing parties in Western European regions – new challenging ideas. *Journal of Contemporary European Studies*, 25(1), 41–56.
- Van Hauwaert, S. M., Schimpf, C. H. & Dandoy, R. (2019). Populist demand, economic development and regional identity across nine European countries: Exploring regional patterns of variance. *European Societies*, 21(2), 303–325.
- Wagner, M. (2021). Affective polarization in multiparty systems. *Electoral Studies*, 69, 102199.
- Ward, D. C. & Tavits, M. (2019). How partisan affect shapes citizens’ perception of the political world. *Electoral Studies*, 60(4), 102045.
- Westwood, S. J., Iyengar, S., Walgrave, S., Leonisio, R., Miller, L. & Strijbis, O. (2018). The tie that divides: Cross-national evidence of the primacy of partyism. *European Journal of Political Research*, 57(2), 333–354.

Appendix

List of countries, regions and elections included in the dataset

Country	N regions	CSES regions	Paper regions	Election years							
Austria	9	NUTS-2	NUTS-2	2008	2013	2017					
Belgium	3	NUTS-2	NUTS-2	1990	2003	2019					
Bulgaria	6	NUTS-3	NUTS-2	2001	2014						
Croatia	2	OTHER	NUTS-2	2007							
Czech Republic	8	NUTS-3	NUTS-2	1996	2002	2006	2010	2013			
Denmark	1	OTHER	NUTS-1	1998	2001	2007					
Estonia	1	NUTS-3	NUTS-2	2011							
Finland	4	NUTS-3	NUTS-2	2003	2007	2011	2015	2019			
France	7	OTHER	NUTS-1	2002	2007	2012	2017				
Germany	16	NUTS-1	NUTS-1	1998	2002	2005	2009	2013	2017		
Greece	4	OTHER	NUTS-1	2009	2012	2015					
Hungary	8	NUTS-2	NUTS-2	1998	2002	2018					
Iceland	1	OTHER	NUTS-2	1999	2003	2007	2009	2013	2016	2017	
Ireland	3	OTHER	NUTS-2	2002	2007	2011	2016				

Country	N regions	CSES regions	Paper regions	Election years						
Italy	21	NUTS-2	NUTS-2	2006	2018					
Latvia	1	NUTS-3	NUTS-2	2010	2011	2014				
Lithuania	2	OTHER	NUTS-2	1997	2016					
Montenegro	1	OTHER	NUTS-2	2012	2016					
The Netherlands	4	NUTS-1	NUTS-1	1998	2002	2006	2010			
Norway	6	NUTS-2	NUTS-2	1997	2001	2005	2009	2013	2017	
Poland	16	NUTS-2	NUTS-2	1997	2001	2007	2011			
Portugal	5	NUTS-2	NUTS-2	2002	2005	2009	2019			
Romania	7	OTHER	NUTS-2	1996	2004	2009	2012			
Serbia	4	NUTS-2	NUTS-2	2012						
Slovakia	4	NUTS-3	NUTS-2	2010	2016					
Slovenia	2	NUTS-3	NUTS-2	1996	2004	2008	2011			
Spain	17	NUTS-2	NUTS-2	1996	2000	2004	2008			
Sweden	8	NUTS-3	NUTS-2	1998	2002	2006	2014	2018		
Switzerland	7	NUTS-3	NUTS-2	1999	2003	2007	2011	2019		
United Kingdom	12	NUTS-1	NUTS-1	1997	2005	2015				

Note: The regional classification method in the CSES dataset is not homogeneous across countries. Column 3 (*CSES regions*) reports the regional classification available in the CSES dataset, where OTHER indicates criteria that do not perfectly match with NUTS classification. In cases of OTHER, we have matched regions with the closest NUTS classification. Column 4 (*Paper regions*) defines the spatial aggregation used in this analysis for each country. Note that we do not consider overseas territories. We have excluded Turkey from our analysis. In fact, previous research has identified that Turkey is a country with extremely high levels of affective polarization (Lauka et al., 2018; Wagner, 2021), making it an outlier case. For the longitudinal analysis, we used 2008 as the year separating two sub-periods. Two countries in our sample had elections in 2008, Austria and Spain. In order to have both countries in both sub-periods, we have classified Austria's 2008 elections as *pre-2008*, while Spain's 2008 elections as *post-2008*.

Address for correspondence: Luca Bettarelli, Centre d'étude de la vie politique (Cevipol), Université libre de Bruxelles (ULB), Avenue F.D. Roosevelt 50, B-1050 Brussels, Belgium; Email: luca.bettarelli@ulb.be